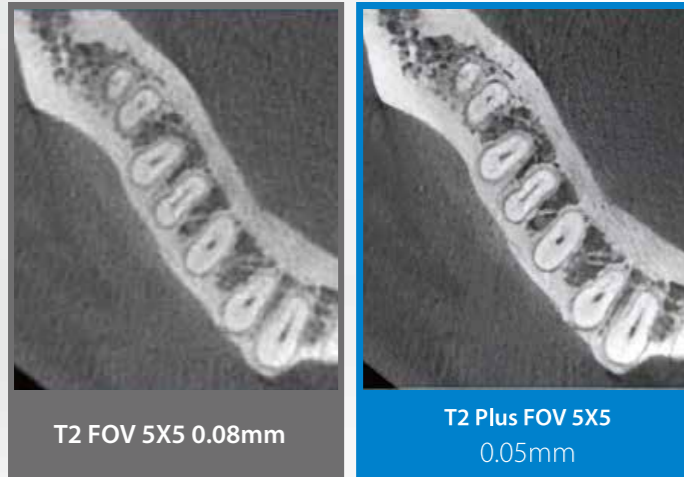


T2 Plus

- Accurate diagnosis with 0.05 mm ultra-high-resolution image
- Minimized Motion Artifacts at twice the imaging speed
- Low-dose CT scan with panoramic radiation dose level

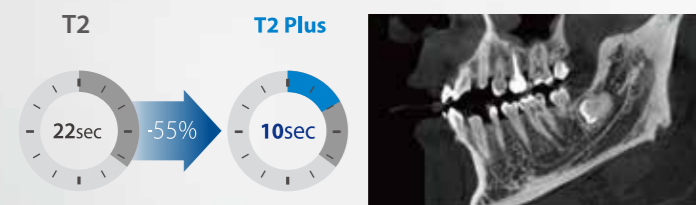
Ultra High Resolution Improvement(0.08mm → 0.05mm)



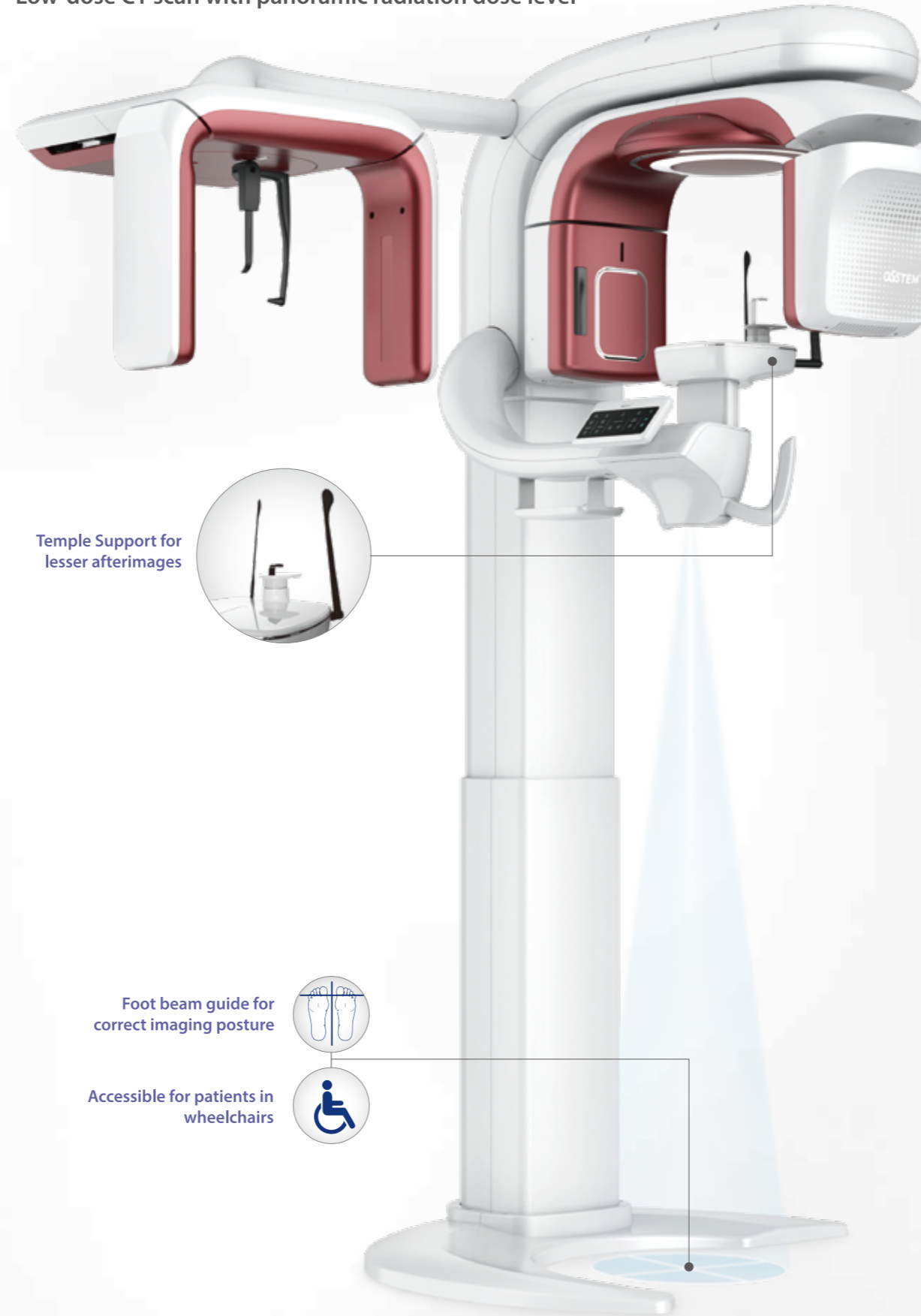
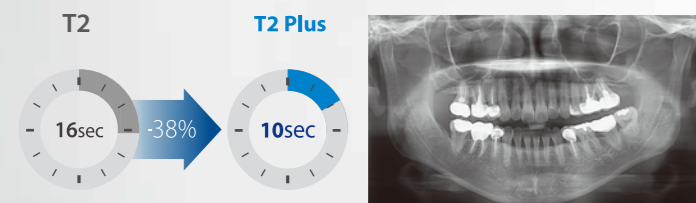
10 sec ultra-fast imaging

Minimized Motion Artifact with Scan Time twice as fast

• CT



• Panorama



15% reduced ultra-low dose radiation imaging

Ultra-low dose radiation imaging of standard CT DRL



Safety for pregnant women and children due to reduced radiation dose



Unique color choices to match your clinic

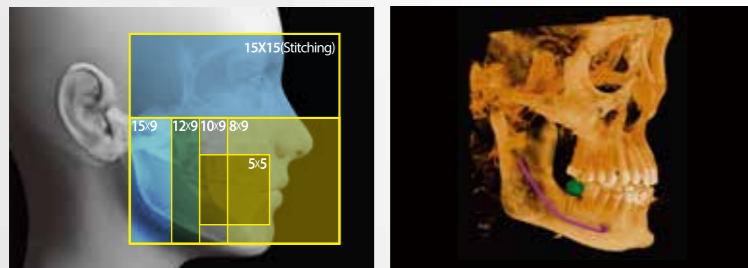


* Blue, Red colors available in the second half of 2023

T2 Plus

- Provide appropriate images for diagnostic purpose using Multi FOV
- Panorama image (from 3D) enables easy implant surgery planning
- Fast scan time and recon time allow image obtained within 30 seconds

Multi FOV allows all types of diagnosis



Multi FOV

FOV 15X15(Stitching)

Chinrest automatic level adjustment allows imaging of TMJ and Stitching



Full Arch

Sinus/TMJ

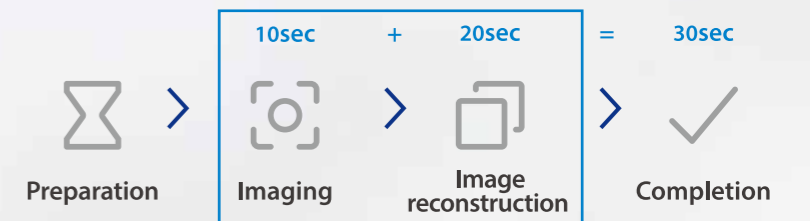
Stitching

'Implant Planning' mode optimizes implant surgery planning

Easy implant surgery planning using 3D panorama

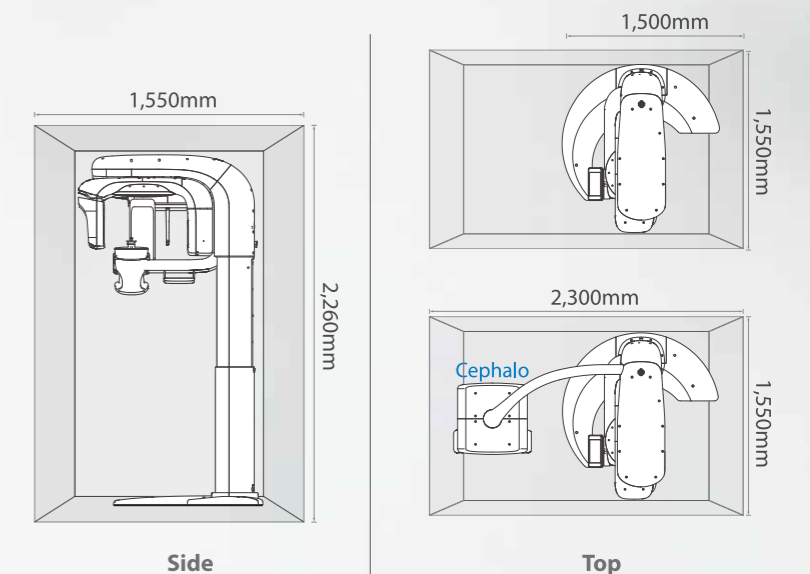


Image obtained within 30 seconds



* Basic imaging (15X9) MAR OFF standards

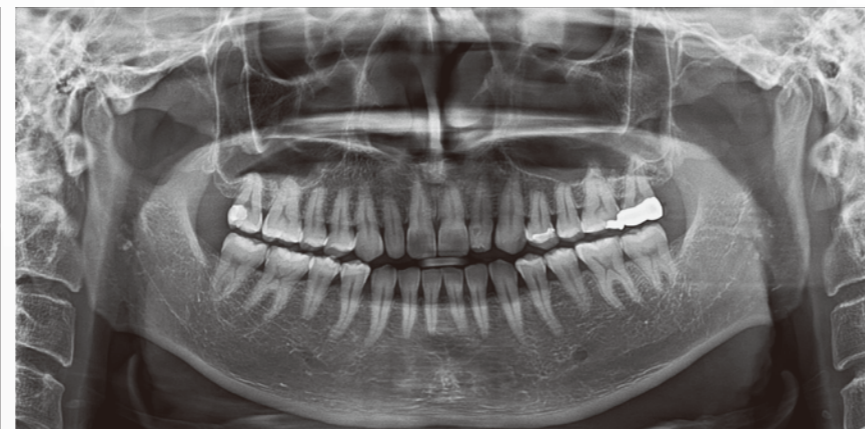
Specification



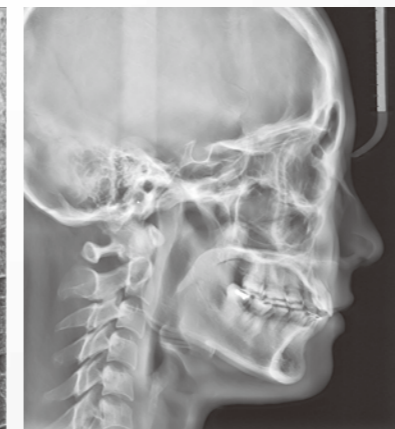
CT



Panorama



Cephalo



FOV	5X5, 10X9, 15X9(Basic), 8X9, 12X9, 15X15(Stitching)		
Voxel Size	0.05 mm to 0.2 mm		
Recon Time	20 sec - (0.2 mm standard)		
Scan Time (sec)	CT	Pano	Ceph
	10 / 22	10 / 16	4 / 9